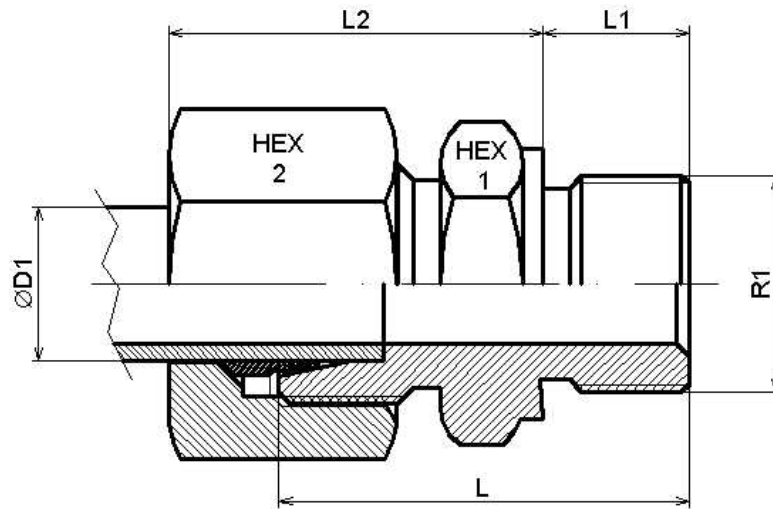


Straight male stud coupling BSP cylindrical

Stainless Steel AISI 316-L

1/2



Part n°	ØD1	Serie	R1	Working Pressure (bar)	L	L1	L2	HEX 1	HEX 2
Z AL 6 R 1/4	6	L	1/4" BSP	315	29	12	25	19	14
Z AL 6 R 3/8	6	L	3/8" BSP	315	30,5	12	26,5	22	14
Z AL 8 R 1/4	8	L	1/4" BSP	315	29	12	25	19	17
Z AL 10 R 1/8	10	L	1/8" BSP	315	25,5	8	25,5	17	19
Z AL 10 R 1/4	10	L	1/4" BSP	315	30	12	26	19	19
Z AL 10 R 3/8	10	L	3/8" BSP	315	31,5	12	27,5	22	19
Z AL 12 R 3/8	12	L	3/8" BSP	315	31,5	12	27,5	22	22
Z AL 12 R 1/2	12	L	1/2" BSP	315	34	14	28	27	22
Z AL 15 R 3/8	15	L	3/8" BSP	315	32,5	12	29	24	27
Z AL 15 R 1/2	15	L	1/2" BSP	315	35	14	29	27	27
Z AL 15 R 3/4	15	L	3/4" BSP	315	38	16	30	32	27
Z AL 18 R 1/2	18	L	1/2" BSP	315	36	14	31	27	32
Z AL 18 R 3/4	18	L	3/4" BSP	315	38	16	31	32	32
Z AL 22 R 1/2	22	L	1/2" BSP	160	38	14	33	32	36
Z AL 22 R 3/4	22	L	3/4" BSP	160	40	16	33	32	36
Z AL 35 R 1 1/4	35	L	1"1/4 BSP	160	48	20	39	50	50
Z AS 6 R 1/4	6	S	1/4" BSP	630	32	12	28	19	17
Z AS 6 R 3/8	6	S	3/8" BSP	630	35	12	31	22	17
Z AS 8 R 1/4	8	S	1/4" BSP	630	34	12	30	19	19
Z AS 8 R 1/2	8	S	1/2" BSP	630	36	14	30	27	19
Z AS 10 R 1/4	10	S	1/4" BSP	630	34	12	31	19	22
Z AS 10 R 3/8	10	S	3/8" BSP	630	34,5	12	31	22	22
Z AS 10 R 1/2	10	S	1/2" BSP	630	39	14	34	27	22
Z AS 12 R 1/4	12	S	1/4" BSP	630	36	12	33	22	24
Z AS 12 R 3/8	12	S	3/8" BSP	630	36,5	12	33,5	22	24
Z AS 14 R 3/8	14	S	3/8" BSP	630	38,5	12	36,5	24	27
Z AS 14 R 1/2	14	S	1/2" BSP	630	41	14	37	27	27

Straight male stud coupling BSP cylindrical

Stainless Steel AISI 316-L

2/2

Part n°	ØD1	Serie	R1	Working Pressure (bar)	L	L1	L2	HEX 1	HEX 2
Z AS 16 R 3/8	16	S	3/8" BSP	400	38,5	12	36,5	27	30
Z AS 16 R 1/2	16	S	1/2" BSP	400	41	14	37	27	30
Z AS 16 R 3/4	16	S	3/4" BSP	400	45	16	39	32	30
Z AS 20 R 1/2	20	S	1/2" BSP	400	45	14	42	32	36
Z AS 20 R 3/4	20	S	3/4" BSP	400	47	16	42	32	36
Z AS 25 R 3/4	25	S	3/4" BSP	400	51	16	47	41	46
Z AS 25 R 1	25	S	1" BSP	400	53	18	47	41	46
Z AS 30 R 1	30	S	1" BSP	400	55	18	50	46	50
Z AS 30 R 1 1/2	30	S	1"1/2 BSP	400	64	22	55	55	50
Z AS 38 R 1 1/4	38	S	1"1/4 BSP	315	62	20	57	55	60